



PLYWOOD | NAILED WOOD | PLASTIC  
HYBRID | WOOD/METAL | HARDBOARD | STAMPED METAL



**CARRIS REELS**  
*employee-owned • customer-driven*

**Vermont**  
**Connecticut**  
**California**  
**Indiana**  
**North Carolina**  
**Virginia**  
**Texas**

Rutland, VT  
Enfield, CT  
Madera, CA  
New Carlisle, IN  
Statesville, NC  
Fincastle, VA  
McKinney, TX  
Bonham, TX  
Monterrey, MEX  
St. Jerome, QC  
Bowmanville, ON

**Mexico**  
**Canada**

**WWW.CARRIS.COM**

(802)-773-9111 Tel  
(860)-749-8308 Tel  
(559)-674-0804 Tel  
(574)-654-8596 Tel  
(704)-872-0981 Tel  
(540)-473-2210 Tel  
(972)-542-3221 Tel  
(903)-640-1503 Tel  
+52(818)-316-7393 Tel  
(450)-431-3221 Tel  
(905)-623-4455 Tel

(802)-770-3551 Fax  
(860)-749-8558 Fax  
(559)-674-0804 Fax  
(574)-654-3149 Fax  
(704)-873-0654 Fax  
(540)-473-2878 Fax  
(972)-548-7335 Fax  
(903)-640-1509 Fax  
+52(818)-316-7395 Fax  
(450)-431-2433 Fax  
(905)-623-9795 Fax

## SPECIFICATION AND QUOTATION SHEET

For a prompt quotation, please photocopy this form, complete it and fax to Carris-Vermont at **802.770.3551**



Company Name \_\_\_\_\_ Your Name \_\_\_\_\_  
 Address \_\_\_\_\_ Position \_\_\_\_\_  
 City \_\_\_\_\_ State \_\_\_\_\_ Zip \_\_\_\_\_ Phone \_\_\_\_\_ Fax \_\_\_\_\_

Type and size of material to be placed on reel:  
 \_\_\_\_\_  
 \_\_\_\_\_

Maximum weight of material to be placed on reel:  
 \_\_\_\_\_

Quantities normally ordered:  
 \_\_\_\_\_

A. Flange diameter: \_\_\_\_\_

B. Traverse length: \_\_\_\_\_

C. Barrel diameter: \_\_\_\_\_

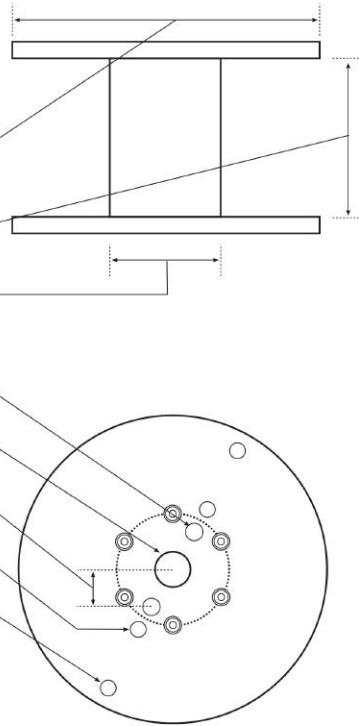
D. Drive hole diameter: \_\_\_\_\_

E. Center hole diameter: \_\_\_\_\_

F. Center-to-center distance: \_\_\_\_\_

G. Start hole, diameter: \_\_\_\_\_

H. Finish hole \_\_\_\_\_



## WOOD/METAL

Wood/metal reels are specifically designed for large or small quantities of in-process work. Wood/metal reels have the advantage of being made with the time-tested strength and smooth surface of hardwood plywood. For fine wire, we offer reeplly, which is hardwood plywood laminated with a facing of super-smooth hardboard. Arbor holes may be either metal lined with steel tubes or steel reinforced. Lug holes can also be steel reinforced.

### FLANGE MATERIALS

#### Hardwood Plywood

- Maple, beech and birch veneers, manufactured at our local mill, offer quality and strength
- Thickness: 3/4" (on 12" to 18" diameters); up to 1 3/4" (on 20" and above)
- Diameter: up to 60"

#### Reeplly

- Hardwood plywood core with smooth hardboard laminated to the outer faces
- Thickness: 3/4" (on 12" to 18" diameters); up to 1 3/4" (on 20" and above)
- Diameter: regularly up to 46", inquire about 60"

### BARREL MATERIALS

#### Galvannealed Steel

- Our highest quality barrel is cut from galvannealed sheet steel and then rolled and welded at our plant. This barrel offers excellent durability, high weight capacity and smoothness.
- Diameters: 8" to 24" and traverse lengths to 36"

#### Staves

- Wood staves in barrel diameters of 10" to 36" and cut to desired length
- Best suited to heavy loads or outdoor applications

#### PVC (Polyvinyl Chloride)

- Available for special applications such as high-winding tension, in-process uses, and where barrel smoothness is critical

#### Plywood

- Barrels are targeted for use where moisture may be a concern
- Our plywood mill offers rolled three-ply construction with staple-stitched seams
- Sizes: Cut to your required traverse and diameter
- Thicknesses: 3/16", 1/4", 5/16"

#### Paper Tubes

- Spiral wound from high-grade paper and glues, these are intended for use where moisture is not a concern; best buy for quality and minimal shrinkage for the lower weight ranges.
- Thicknesses: Tailored to suit your weight load
- Sizes: Regularly available in 1" increments ranging from 4" to 14" diameters; however, we can accommodate most special needs

### BORINGS

- Arbor, lug, start and/or lifting holes can be reinforced with steel

### FASTENERS

#### Bolts

- Available in 5/16" and 3/8" diameters, depending on application

#### Washers

- Flat or cup

